

AGENDA SUPPLEMENT (1)

Meeting: Strategic Planning Committee

Place: Council Chamber - County Hall, Trowbridge BA14 8JN

Date: Thursday 2 March 2023

Time: 2.00 pm

The Agenda for the above meeting was published on 22 February 2023. Additional documents are now available and are attached to this Agenda Supplement.

Please direct any enquiries on this Agenda to Tara Hunt of Democratic Services, County Hall, Bythesea Road, Trowbridge, direct line 01225 718352 or email tara.hunt@wiltshire.gov.uk

Press enquiries to Communications on direct lines (01225)713114/713115.

This Agenda and all the documents referred to within it are available on the Council's website at www.wiltshire.gov.uk

6a **PL/2021/06112 - Land at Forest Gate, Pewsham, Chippenham, SN15 3RS (Pages 3 - 18)**

DATE OF PUBLICATION: 28 February 2023

This page is intentionally left blank

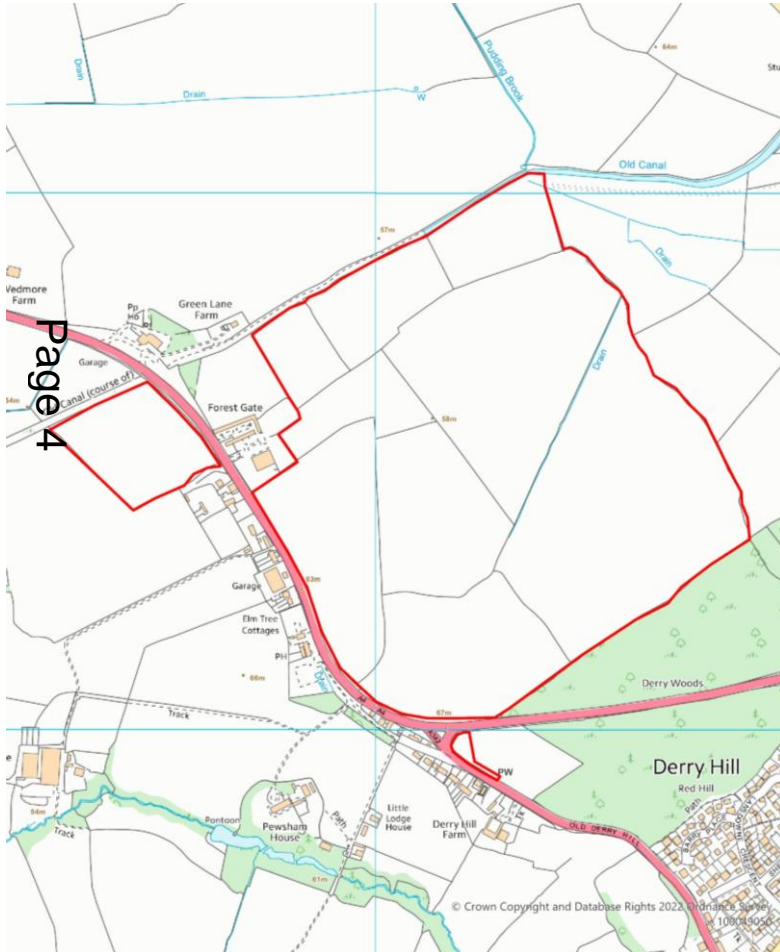
Strategic Planning Committee

2nd March 2023

PL/2021/06112 - Land at Forest Gate, Pewsham, Chippenham, SN15 3RS

The development of a solar farm of up to 49.9 MW of generating capacity, comprising the installation of solar photovoltaic panels and associated infrastructure including customer cabin, customer substation, DNO substation and equipment, inverter and transformer substations, spare part container, associated battery storage, access tracks, fencing, security cameras, landscape planting and associated works

Recommendation: Approve with Conditions



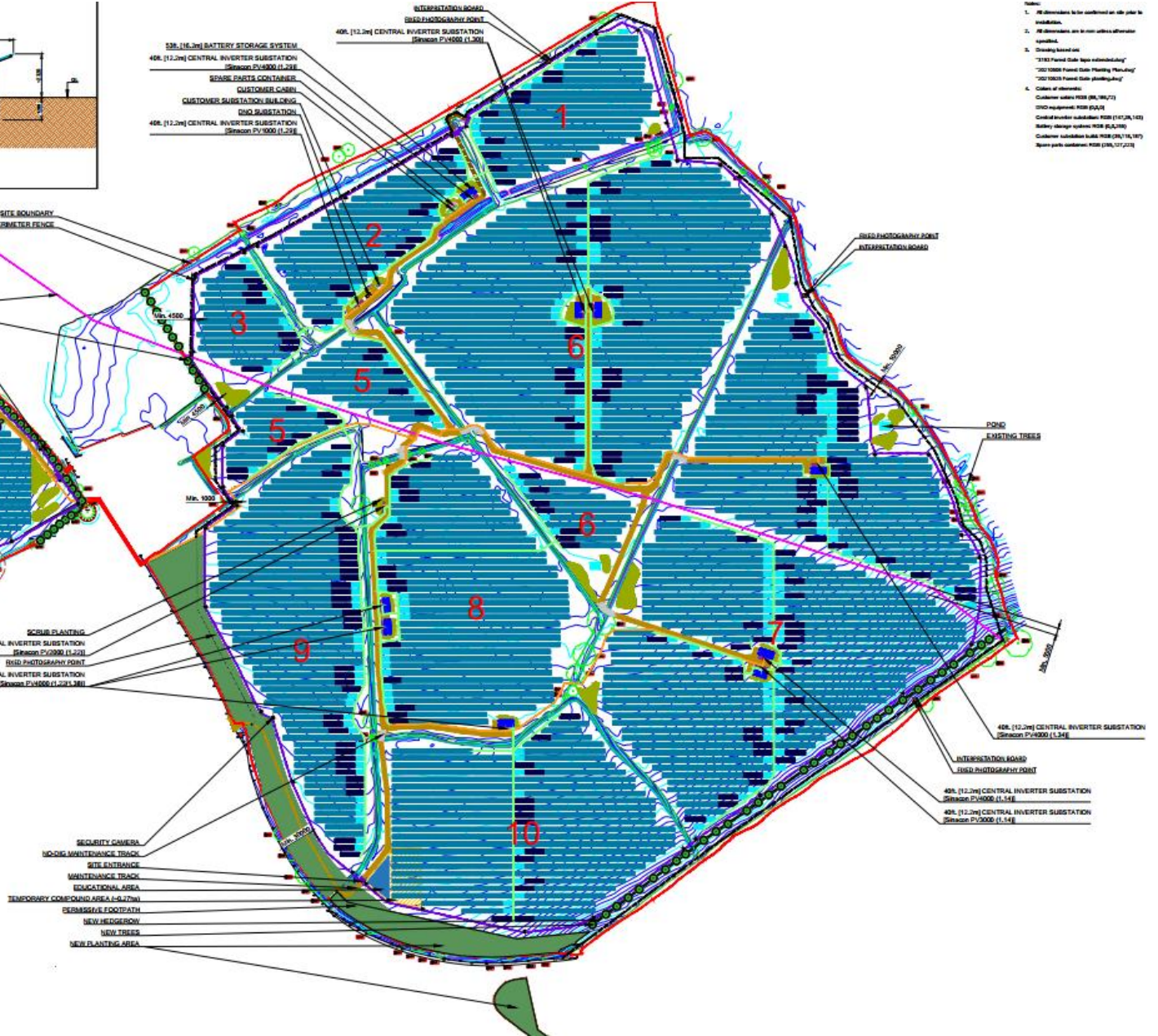
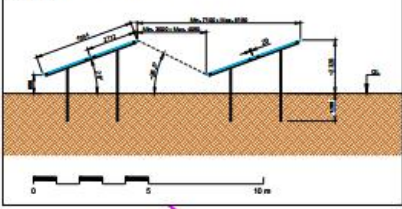
Site Location Plan



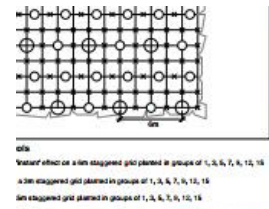
Aerial Photography

PV Solar Layout

DETAIL A || 2 modules in portrait side view
M 1:100 @A1



Planting Plan



Water effect on a tree staggered grid planted in groups of 1, 3, 6, 7, 8, 12, 15
 a 3m staggered grid planted in groups of 1, 3, 6, 7, 8, 12, 15
 1m staggered grid planted in groups of 1, 3, 6, 7, 8, 12, 15

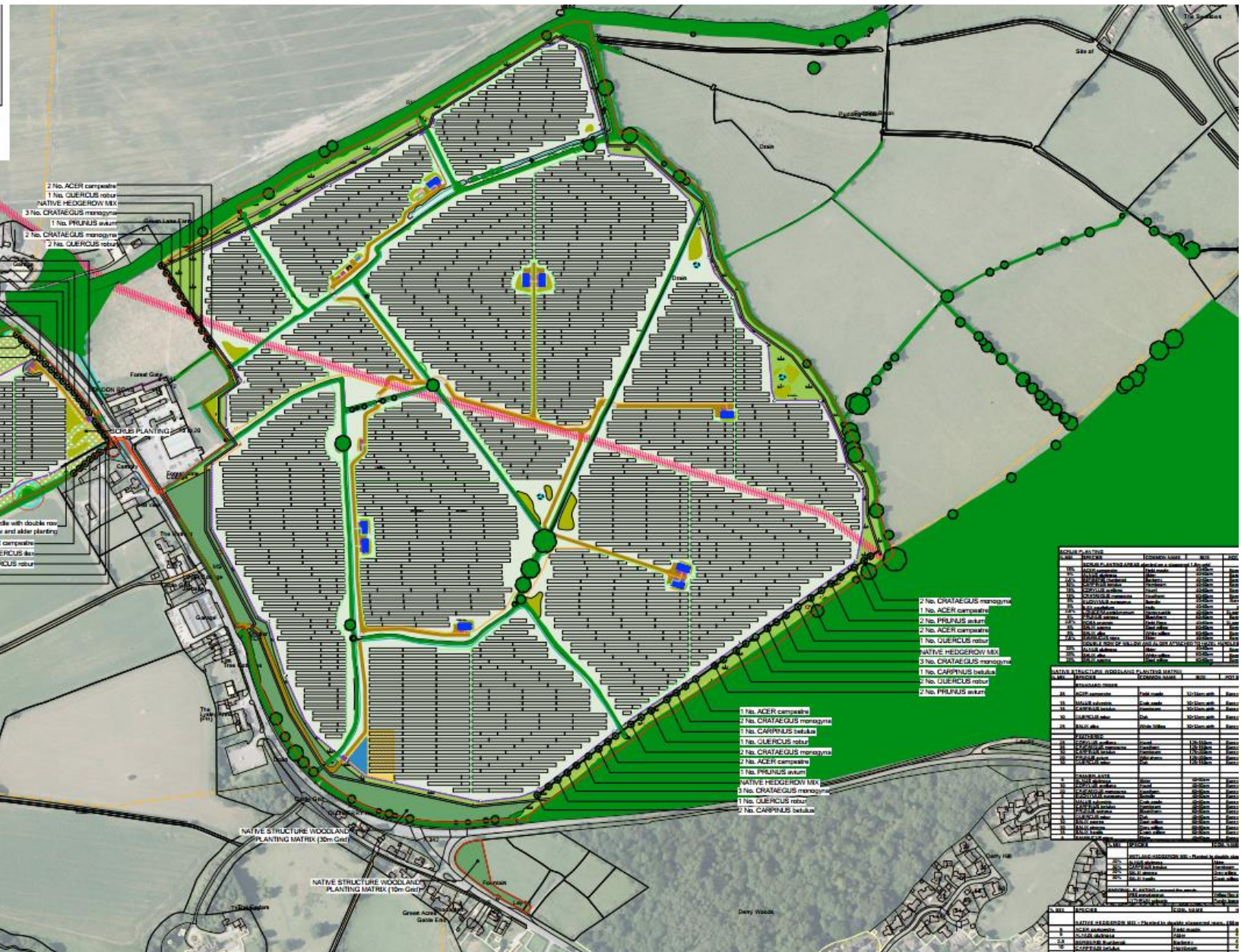
more Ferns

- 2 No. ACER campestre
- 1 No. QUERCUS robur
- NATIVE HEDGEROW MIX
- 3 No. CRATAEGUS monogyna
- 1 No. PRUNUS avium
- 2 No. CRATAEGUS monogyna
- 2 No. QUERCUS robur
- 1 No. QUERCUS robur
- 3 No. CRATAEGUS monogyna
- 1 No. CARPINUS betula
- 1 No. CRATAEGUS monogyna
- 3 No. ACER campestre
- 1 No. QUERCUS robur
- 2 No. PRUNUS avium
- WETLAND HEDGEROW MIX
- 2 No. ACER campestre

- Hand handle with double row of willow and other planting
- 3 No. ACER campestre
- 2 No. QUERCUS robur
- 1 No. QUERCUS robur
- WETLAND HEDGEROW MIX
- 5 No. QUERCUS robur

- 2 No. CRATAEGUS monogyna
- 1 No. ACER campestre
- 2 No. PRUNUS avium
- 2 No. ACER campestre
- 1 No. QUERCUS robur
- NATIVE HEDGEROW MIX
- 3 No. CRATAEGUS monogyna
- 1 No. CARPINUS betula
- 2 No. QUERCUS robur
- 2 No. PRUNUS avium

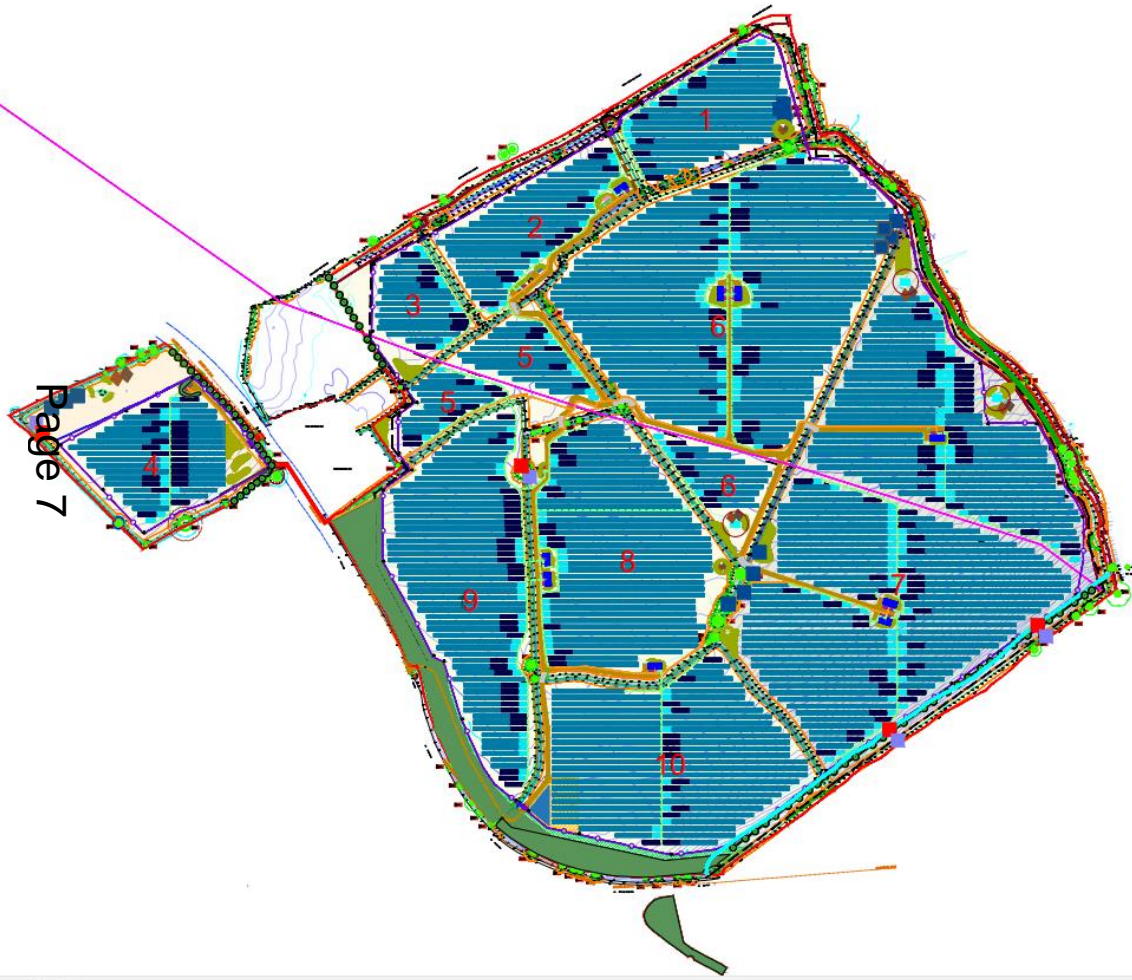
- 1 No. ACER campestre
- 2 No. CRATAEGUS monogyna
- 1 No. CARPINUS betula
- 1 No. QUERCUS robur
- 2 No. CRATAEGUS monogyna
- 2 No. ACER campestre
- 1 No. PRUNUS avium
- NATIVE HEDGEROW MIX
- 3 No. CRATAEGUS monogyna
- 1 No. QUERCUS robur
- 2 No. CARPINUS betula



NO.	PLANT	QUANTITY	SIZE	DATE
1	ACER CAMPESTRE	2	100mm	2023
2	CRATAEGUS MONOGYNA	2	100mm	2023
3	PRUNUS AVIUM	2	100mm	2023
4	QUERCUS ROBUR	2	100mm	2023
5	CARPINUS BETULA	1	100mm	2023
6	CRATAEGUS MONOGYNA	3	100mm	2023
7	ACER CAMPESTRE	3	100mm	2023
8	PRUNUS AVIUM	1	100mm	2023
9	QUERCUS ROBUR	1	100mm	2023
10	CARPINUS BETULA	1	100mm	2023
11	CRATAEGUS MONOGYNA	1	100mm	2023
12	ACER CAMPESTRE	1	100mm	2023
13	PRUNUS AVIUM	1	100mm	2023
14	QUERCUS ROBUR	1	100mm	2023
15	CARPINUS BETULA	1	100mm	2023
16	CRATAEGUS MONOGYNA	1	100mm	2023
17	ACER CAMPESTRE	1	100mm	2023
18	PRUNUS AVIUM	1	100mm	2023
19	QUERCUS ROBUR	1	100mm	2023
20	CARPINUS BETULA	1	100mm	2023
21	CRATAEGUS MONOGYNA	1	100mm	2023
22	ACER CAMPESTRE	1	100mm	2023
23	PRUNUS AVIUM	1	100mm	2023
24	QUERCUS ROBUR	1	100mm	2023
25	CARPINUS BETULA	1	100mm	2023
26	CRATAEGUS MONOGYNA	1	100mm	2023
27	ACER CAMPESTRE	1	100mm	2023
28	PRUNUS AVIUM	1	100mm	2023
29	QUERCUS ROBUR	1	100mm	2023
30	CARPINUS BETULA	1	100mm	2023
31	CRATAEGUS MONOGYNA	1	100mm	2023
32	ACER CAMPESTRE	1	100mm	2023
33	PRUNUS AVIUM	1	100mm	2023
34	QUERCUS ROBUR	1	100mm	2023
35	CARPINUS BETULA	1	100mm	2023
36	CRATAEGUS MONOGYNA	1	100mm	2023
37	ACER CAMPESTRE	1	100mm	2023
38	PRUNUS AVIUM	1	100mm	2023
39	QUERCUS ROBUR	1	100mm	2023
40	CARPINUS BETULA	1	100mm	2023
41	CRATAEGUS MONOGYNA	1	100mm	2023
42	ACER CAMPESTRE	1	100mm	2023
43	PRUNUS AVIUM	1	100mm	2023
44	QUERCUS ROBUR	1	100mm	2023
45	CARPINUS BETULA	1	100mm	2023
46	CRATAEGUS MONOGYNA	1	100mm	2023
47	ACER CAMPESTRE	1	100mm	2023
48	PRUNUS AVIUM	1	100mm	2023
49	QUERCUS ROBUR	1	100mm	2023
50	CARPINUS BETULA	1	100mm	2023

Page 6

Ecology



Page 7

Ecology Keys:

- Bat boxes (x4)
- Bird boxes (x4)
- Hedgerow
- ◆ Hibernacula (x4) & Log Pile (x4)
- Scrape
- ~ Scrub
- Solitary Bee Hotels (x14)
- Wetland hedging
- Existing Grassland
- Diverse Grassland
- Woodland
- Scrape and Pond

Buffer Keys:

- 4.5m buffer
- 10m buffer
- 15m buffer
- 50m buffer

**Refer to EDR1004-100H PV Layout for technical keys*

Photographs of the area



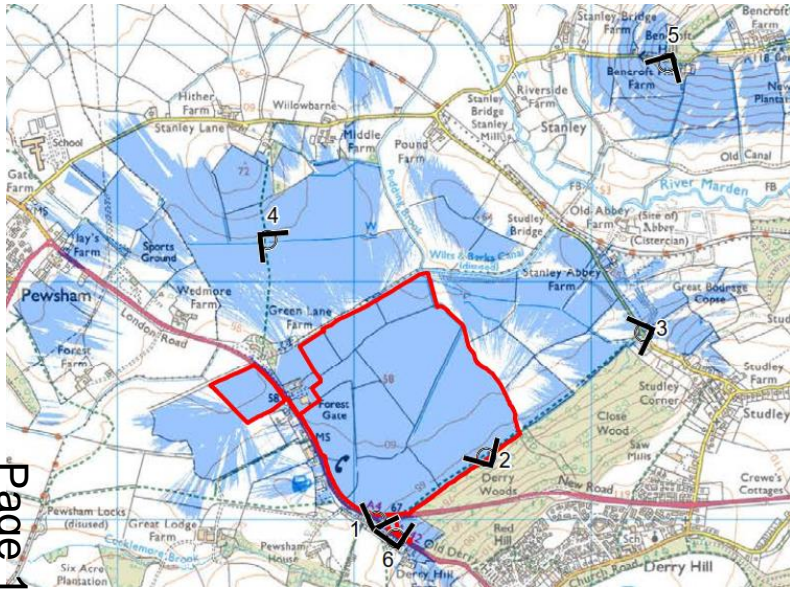
Page 8



Photographs of the area



LVIA View points and Photomontages



Page 10



LVIA View points and Photomontages



Page 11



LVIA View points and Photomontages



Page 12



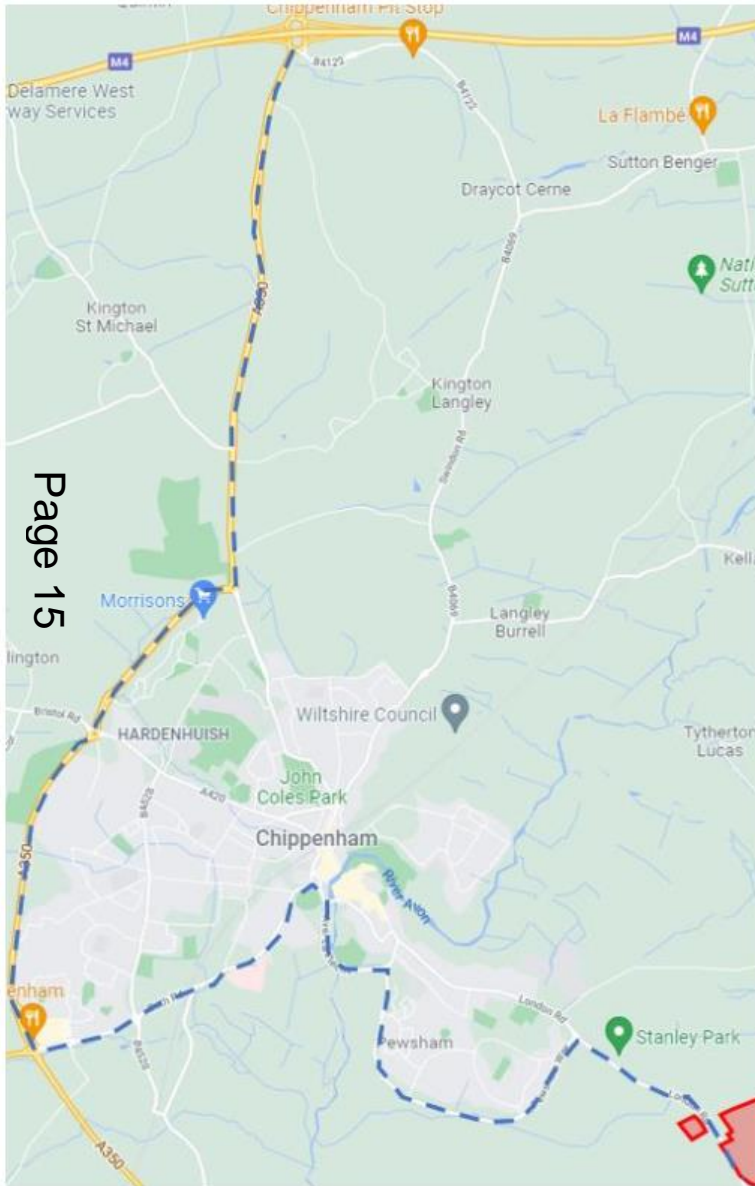
LVIA View points and Photomontages



LVIA View points and Photomontages



Highways access and construction traffic route



Page 15

Figure 2: Recommended Route

Photo of position of accesses for the site



Page 16



Strategic Planning Committee

2nd March 2023

This page is intentionally left blank